

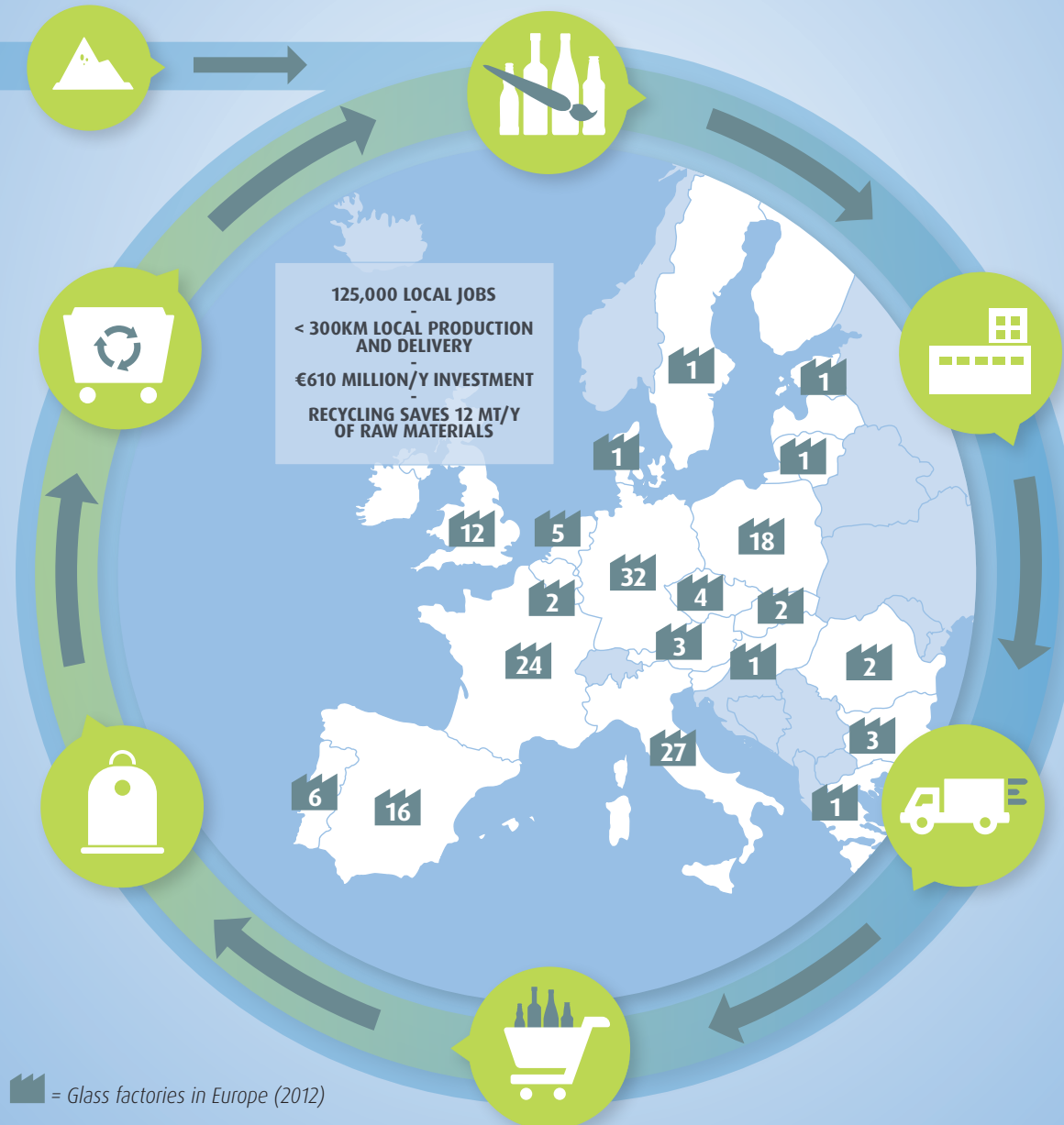
EU glass packaging industry: Making the EU circular economy real in 7 steps

7. RAW MATERIALS
Using 1 ton of recycled glass
**saves 1.2 tons of virgin raw
materials and avoids 60% of CO₂.**
More than 70% of raw materials
travel less than 300 km.

6. RECYCLING
Glass is **100% infinitely recyclable** in
a bottle-to-bottle closed loop, with no
loss of quality. Recycled glass is a
precious raw material permanently
available for multiple recycling.

5. COLLECTION
Over 70% of all glass bottles
are collected for recycling annually.

**4. CONSUMPTION:
USE AND REUSE**
87% of Europeans prefer glass.
Glass packaging indirectly contributes to
a positive trade balance of €21 billion
per year (2012). Glass can be recycled,
refilled or reused.



1. DESIGN
Glass is designed for the
environment: glass bottles are
30% lighter today than 20 years ago
while maintaining product preservation,
recyclability and innovative design.

2. PRODUCTION
Production has increased by 39.5%
in the last 25 years, and the industry
maintains **125,000 direct and indirect
jobs** in 162 plants across Europe.
We have **reduced our energy
use by 80%** in the last 50 years.

We **contribute €1 billion per year** to
public finances and **€9.5 billion to the
EU annual GDP**. On average up to **€610
million is invested per year** – 10% of
operational and maintenance costs.

3. DISTRIBUTION
More than 50% of glass
bottles and jars are
**delivered to customers
within a 300km distance.**